



STATE OF GREEN ECONOMY REPORT 2015



كربون دبي
DUBAI CARBON



دبي، عاصمة
الاقتصاد الأخضر
DUBAI, CAPITAL OF
GREEN ECONOMY

Published by

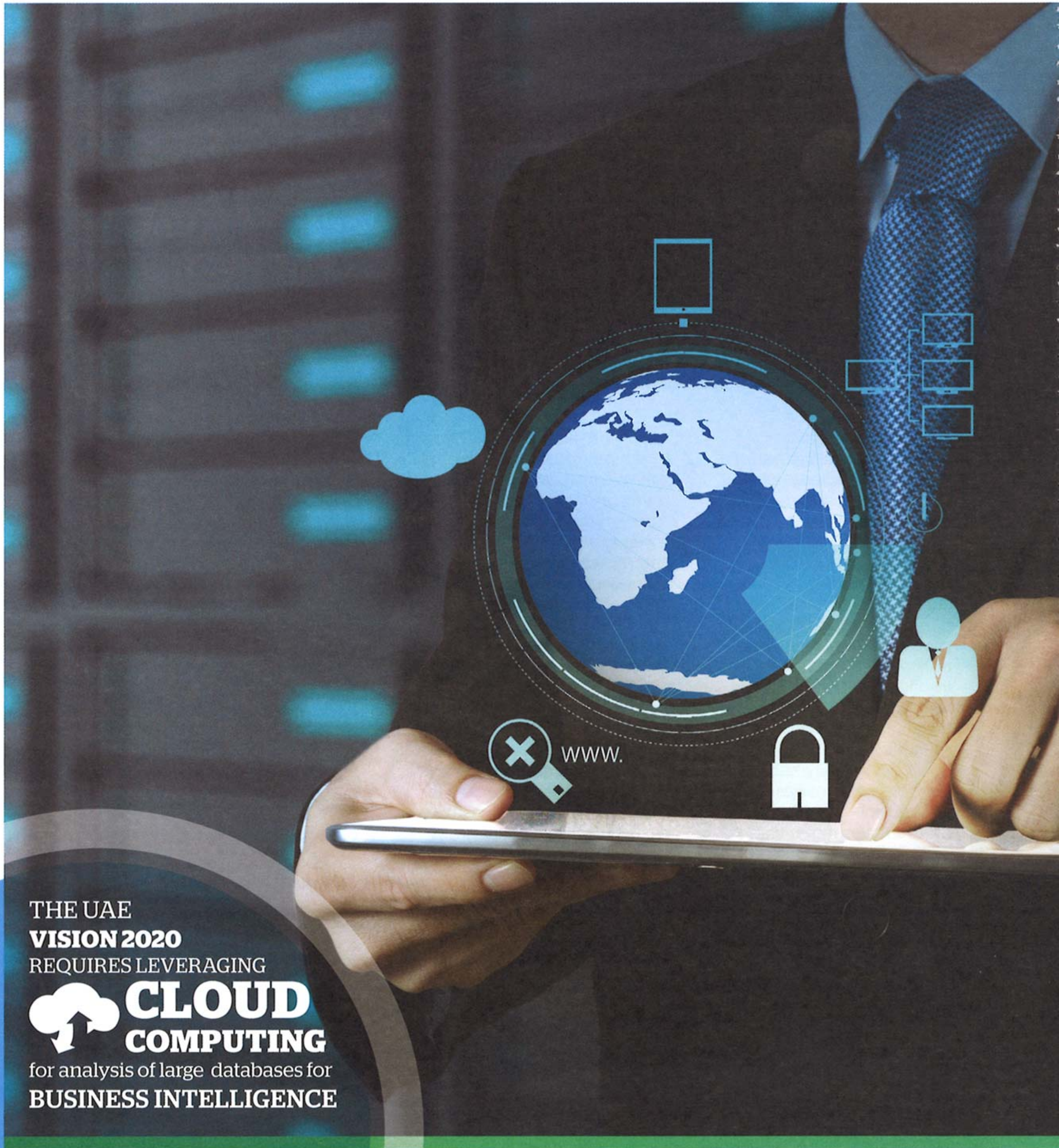
 القمة العالمية للاقتصاد الأخضر
WORLD GREEN ECONOMY SUMMIT
22-23 April 2015 ٢٢-٢٣ أبريل ٢٠١٥
Dubai, United Arab Emirates دبي، الإمارات العربية المتحدة

Supported by

 المجلس الأعلى للطاقة
Supreme Council of Energy

 هيئة كهرباء ومياه دبي
Dubai Electricity & Water Authority

INTERVIEW: DILIP RAHULAN



THE UAE
VISION 2020

REQUIRES LEVERAGING

 **CLOUD
COMPUTING**

for analysis of large databases for
BUSINESS INTELLIGENCE

Q3. WHAT IS YOUR GROWTH PLAN FOR THE GLOBAL COMMAND CONTROL CENTER THAT MONITORS ENERGY-CONSUMING METRICS REMOTELY, CURRENTLY ACROSS THE U.S, CHINA, INDIA AND THE UAE? HOW CAN THE CENTRE HELP IN DEVELOPING INTERCONNECTED SMART CITIES?

D.R.: Pacific Controls has strategically partnered with Jones Laing LaSalle, a global leader in real-estate development and facilities management, to provide our managed services to the United States, China and India. The joint service offered by the two companies is branded as Intellicommand. Intellicommand offers an end-to-end city-management platform, providing real-time managed services for smart-city infrastructure.



Q4. WHAT ARE SOME OF THE CHALLENGES YOU HAVE FACED IN ASSISTING DUBAI TO BECOME A SMART CITY?

D.R.: Development of a smart city is a dynamic process and involves the integration of various services in the government and private sector. This integration is one of the biggest challenges that needs to be addressed through knowledge exchange and integration of service. There is a whole new business culture that is emerging out of real-time business intelligence.

Q5. WHAT ARE THE INTERNATIONAL BEST PRACTICES THAT YOU FOLLOW IN YOUR CENTRALISED IT CLOUD SYSTEMS?

D.R.: Pacific Controls' commitment to best practices is proven by its commitment to sustainability. Our world-class Data Centre Campus infrastructure is benchmarked to international sustainability standards and is a Tier III Uptime Institute design and construction certified facility. We are following ITIL standards for all of our IT infrastructure and IEEE & Cloud Standards Council of ITU for cloud-computing infrastructure.

Q6. PACIFIC CONTROLS HAS A RANGE OF HARDWARE AND SOFTWARE TOOLS. WHICH ONE DO YOU THINK PLAYS THE MOST IMPORTANT ROLE IN SMART CITIES AND WHY?

D.R.: Pacific Controls' Galaxy 2021 platform is a software platform that provides end-to-end city-management capability and integrates machine-to-machine applications from all service providers. The artificial intelligence embedded in the Galaxy Platform, called GBots, is the unique value proposition our platform offers our customers. Delivering real-time information into the cloud - enabling business intelligence and governance data to manage the ecosystem of a smart city - and the capability of integrating data from the internet creates a unique value proposition for managing a smart city.

Q7. HOW HAS THE MARKET RESPONDED TO YOUR EMIRATES ENERGY STAR PROGRAMME?

D.R.: Pacific Controls is happy that the Emirates Energy Star program has tremendous support from the government sector. Currently we are implementing the Emirates Energy Star programme in multiple government departments.

Q8. WHAT INSPIRED YOUR COMPANY'S COMMITMENT TO SUSTAINABLE DEVELOPMENT AND ENVIRONMENTAL IMPROVEMENT?

D.R.: Pacific Controls has always been committed to corporate social responsibility, and as part of this commitment Pacific Controls has been responsible for delivering technology for sustainable development. *em.d*

With Contributions from



THIS PUBLICATION HAS BEEN CREATED WITH THE KIND SUPPORT OF:

| | | | | |
|----------|--|--|--|--|
| PLATINUM | | | | |
| GOLD | | | | |
| SILVER | | | | |

ISBN 6-583-22-9948-978